



Macomb Science Olympiad

Amazing Arthropods

Insect Order Workbook

Blattodea & Mantodea

European Mantis; Creative Commons

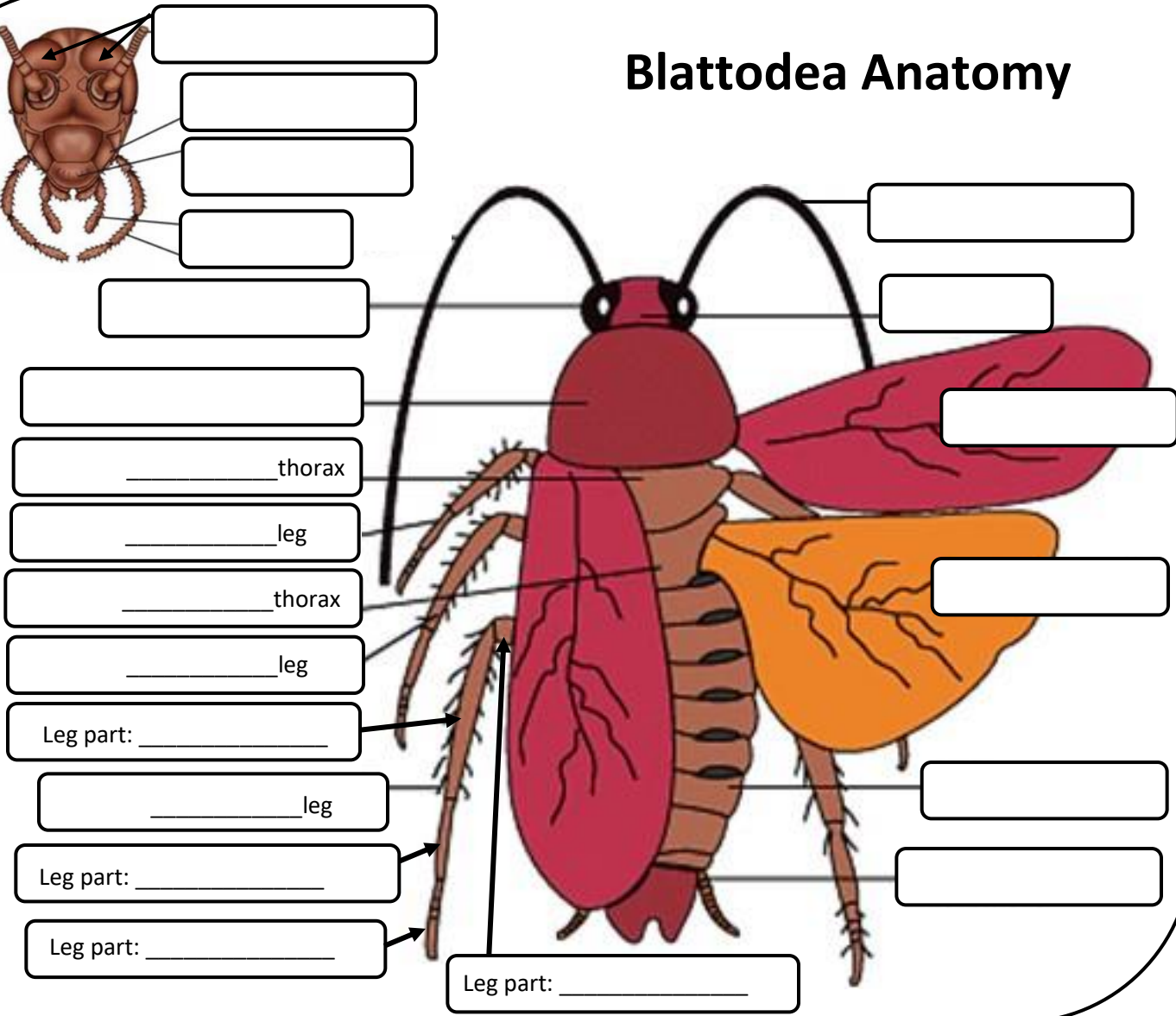
Contents compiled by Event Supervisor, Michelle Serreyn

Arthropod Class: Insecta

Circle which Arthropods are classified as Class Insecta. Underline which insects are classified in Order Blattodea.

Centipedes Crickets Dragonflies Flies Mites Springtails Fleas Ladybugs Cockroaches Termites Scorpions Earwigs Pill Bugs Mosquitoes Woodlice Wasps Millipedes Damselflies Cicadas Lice Ticks Butterflies Crayfish Mayflies Spiders Bees Moths Ants Fireflies Katydid

Blattodea Anatomy



KEY TERMS

Label visible parts

Head

Antennae

Mouthparts

Maxilla, Labrum and Palps

Compound Eyes

Pronotum

Thorax and Legs

Prothorax/Prothoracic legs

Mesothorax/Mesothoracic legs

Metathorax/Metathoracic legs

Coxa, Femur, Tibia and Tarsus

Wings

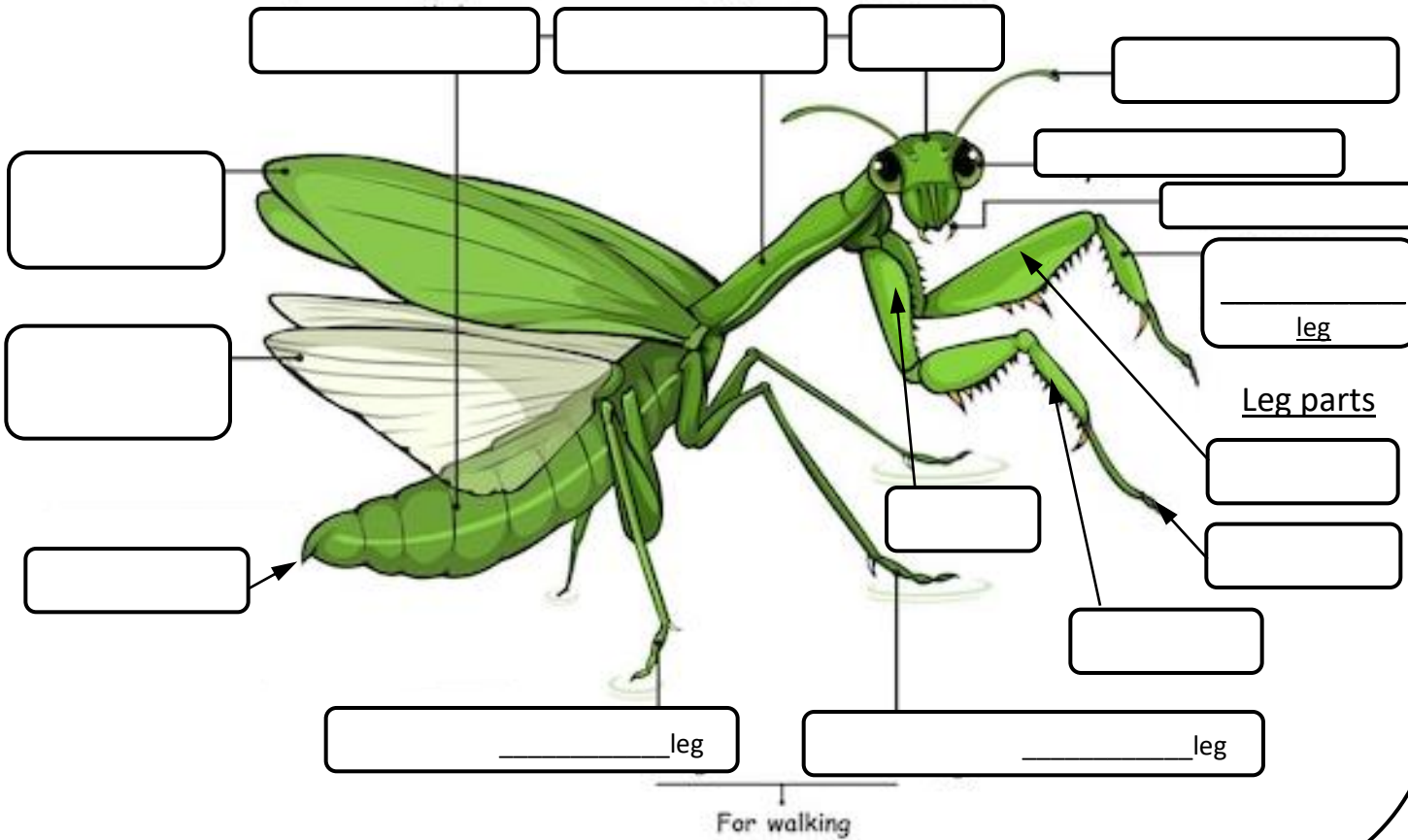
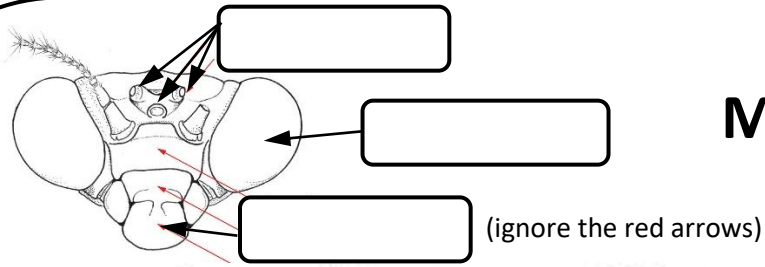
Forewings and Hindwings

Abdomen

Cercus/Cerci

(present only on male, female or both?)

Mantodea Anatomy



KEY TERMS

Label visible parts

Head

Antennae

Mouthparts

Labrum and Mandibles

Eyes

Compound and Simple

Thorax and Legs

Prothorax/Prothoracic legs
 Mesothorax/Mesothoracic legs
 Metathorax/Metathoracic legs
 Coxa, Femur, Tibia and Tarsus

Wings

Forewings and Hindwings

Cercus/Cerci

(present only on male, female or both?)

Key Differences* between Mantids (M) and Mantidflies (MF)

Antennae: Very long _____ Not as long _____

Forewings & Hindwings: Similar, membranous, net-veined _____ Different _____

Forelegs: Used for grasping and walking _____ Used only for grasping _____

Cerci: Present _____ Absent _____

Development/Metamorphosis: Complete _____ Gradual _____