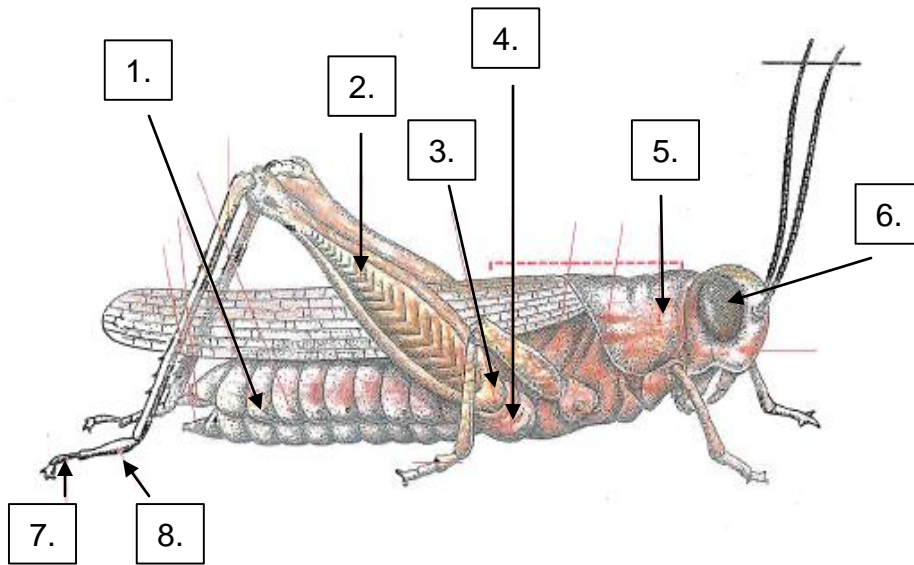


## Station 1.



Identify the body structure.

1. \_\_\_\_\_

2. \_\_\_\_\_

3. \_\_\_\_\_

4. \_\_\_\_\_

5. \_\_\_\_\_

6. \_\_\_\_\_

7. \_\_\_\_\_

8. \_\_\_\_\_

a. Coxa

b. Tarsus

c. Compound Eye

d. Spiracle

e. Trochanter

f. Pretarsus

g. Femur

h. Prothorax

## Station 2:

1. This insect belongs to the Order:
  - a. Hymenoptera
  - b. Hemiptera
  - c. Ichneumonidae
  - d. Diptera



2. This has a very long structure at the end of its abdomen, called a/an \_\_\_\_\_.  
This structure is used for \_\_\_\_\_.
  - a. Stinger/Defense
  - b. Antenna/Sensing
  - c. Ovipositor/Egg-laying
  - d. False head/Deceiving predators
3. Which of the following statement(s) is/are **not** true?
  - a. This is an asocial insect.
  - b. It lays its eggs in deep in wood, which the larva then eats.
  - c. Most wasps in this family do not sting.
  - d. This wasp is a beneficial predator of insect pests.
  - e. Both a. and c. are not true.

## Station 3:

1. An insect's thorax is divide into:
  - a. Three sections; prothorax, metathorax, and mesothorax
  - b. Three sections; prothorax, mesothorax, and metathorax
  - c. Three sections; head, thorax, and abdomen
  - d. Two sections; prothorax and cephalothorax
2. Some parts of an insect's body (head/thorax) are made up of plates called:
  - a. Pleurites
  - b. Sclerites
  - c. Thorites
  - d. Aintrites
3. An insect has 2-3 simple eyes and two larger \_\_\_\_\_ eyes.
  - a. Complex
  - b. Ocelli
  - c. Rhabdomes
  - d. Compound

## Answer Key

### **Station 1:**

1. d
2. g
3. e
4. a
5. h
6. c
7. f
8. b

### **Station 2:**

1. a – Order = Hymenoptera, Family = Ichneumonidae; Question asked the Order
2. c
3. b – The larva do not eat wood; they are parasites of grubs that live within the wood

### **Station 3:**

1. b
2. b
3. d