

**Instructions (shown before students start the test)**

For this practice exam, you will have 30 minutes to complete.

There are 50 Questions pertaining to Fossils stations 1 thru 10, and the questions will be Multiple choice, True/False, and some fill-in-the-blanks.

**Introduction (shown after students start the test)**

1. (1.00 pts) Station 1

**Station 1**



**Figure 1**

1. What is the Phylum of the Creature A?

- A) Trilobita
- B) Arthropoda
- C) Euripterida
- D) Calymene
- E) None of these

2. (1.00 pts) Station 1

**Station 1**



**Figure 1**

2. In Figure 1, the description of fossil B is called:

- A) Trilobite
- B) Borings
- C) Trails
- D) Detrital material
- E) Predation marks

3. (1.00 pts) Station 1

### Station 1



Figure 1

3. The Fossil in Figure 1 can be described as infaunal and benthic.

- True
- False

4. (1.00 pts) Station 1

### Station 1



Figure 1

4. The Fossil in Figure 1 could \_\_\_\_\_ its exoskeleton as a defense against \_\_\_\_\_.

- A) shed, predators
- B) encase, predators
- C) prone, predators
- D) enroll, predators
- E) none of these

5. (1.00 pts) Station 1

### Station 1



Figure 1

5. The Fossil labeled B above is called an ichnofossil.

True  False

6. (1.00 pts) Station 2

### Station 2



Creature A



Creature B

6. What Clade does Creature A and Creature B belong to?

- A) Chordata
- B) Dinosauria
- C) Theropoda

7. (1.00 pts) Station 2

### Station 2



Creature A



Creature B

7. Creature A is in the Order \_\_\_\_\_.

- A) Saurischia
- B) Ornithischia
- C) Ornithopoda

8. (1.00 pts) Station 2

**Station 2**



Creature A



Creature B

8. Creature B is in the Order \_\_\_\_\_.

- A) Ornithischia
- B) Saurichia
- C) Sauropodomorpha

9. (1.00 pts) Station 2

**Station 2**



Creature A



Creature B

9. What Geologic Era did Creature A and Creature B live?

- A) Mesozoic
- B) Early Paleozoic
- C) Late Jurassic
- D) Middle Cretaceous
- E) None of these

10. (1.00 pts) Station 2

### Station 2



Creature A



Creature B

10. Which Creature was Bipedal?

- A) Creature A
- B) Creature B
- C) None of these

11. (3.00 pts)

Station 3

### Station 3

Name the Order, Genus or Species of the Fossils A through H. Choose from the following word bank. Answers must be typed in exactly as spelled in word bank (Upper case, lower case, etc.)

Plateosaurus Dimetrodon H. sapiens Basilosaurus Archaeopteryx H. neanderthalensis Mammut  
 Spinosaurus Plesiosaur Mosasaur Mammuthus Mesohippus Equus Pterosaur

Fossil A



Fossil C



Fossil E



Fossil B



Fossil D



Fossil F



Fossil G



Fossil H



11. Identify Fossils A, B and C. There are 3 blanks, below. Identify A, then B and finally C. (From left to right) Use the exact word in the word bank to get credit.

12. (3.00 pts)

Station 3

### Station 3

Name the Order, Genus or Species of the Fossils A through H. Choose from the following work bank. Answers must be typed in exactly as spelled in word bank (Upper case, lower case, etc.)

Plateosaurus Dimetrodon H. sapiens Basilosaurus Archeopteryx H. neanderthalensis Mammut  
Spinosaurus Plesiosaur Mosasaur Mammuthus Mesohippus Equus Pterosaur

### Station 3

Name the Order, Genus or Species of the Fossils A through H. Choose from the following work bank. Answers must be typed in exactly as spelled in word bank (Upper case, lower case, etc.)

Plateosaurus Dimetrodon H. sapiens Basilosaurus Archaeopteryx H. neanderthalensis Mammut  
Spinosaurus Plesiosaur Mosasaur Mammuthus Mesohippus Equus Pterosaur

Fossil A



Fossil B



Fossil C



Fossil D



Fossil G



Fossil H



Fossil E



Fossil F



12. Identify Fossils D, E and F. There are 3 blanks, below. Identify D, then E and then F. (From left to right) Use the exact word in the word bank to get credit.

13. (2.00 pts)

Station 3

### Station 3

Name the Order, Genus or Species of the Fossils A through H. Choose from the following work bank. Answers must be typed in exactly as spelled in word bank (Upper case, lower case, etc.)

Plateosaurus Dimetrodon H. sapiens Basilosaurus Archaeopteryx H. neanderthalensis Mammut  
Spinosaurus Plesiosaur Mosasaur Mammuthus Mesohippus Equus Pterosaur



Fossil A



Fossil B



Fossil C



Fossil D



Fossil E



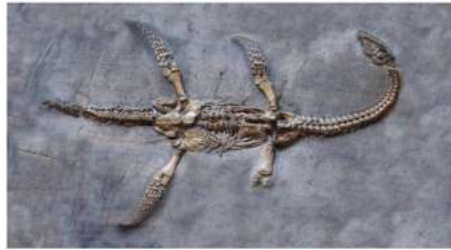
Fossil F



Fossil G



Fossil H



13. Identify Fossils G and H. There are 3 blanks, below. Identify G, then H. Leave the 3rd blank empty. (From left to right) Use the exact word in the word bank to get credit.

14. (1.00 pts)  
Station 4

## Station 4

Fossil A



Fossil B



Fossil C



Fossil D



14. The Fossils A thru D have a filter called a \_\_\_\_\_ which they use to catch small particles of food that float past them in the water. They live in the sea, and most are attached to the sea-floor by a fleshy stalk called a \_\_\_\_\_.

- A) siphon, umbro
- B) tentacles, ligament
- C) lophophore, pedicle
- D) None of these

15. (1.00 pts) Station 4



## Station 4

Fossil A



Fossil B



Fossil C



Fossil D



15. What Phylum do Fossils A thru D belong to?

- A) Mollusca
- B) Brachiopoda
- C) Bivalvia
- D) Gastropoda

16. (1.00 pts) Station 4

## Station 4

Fossil A



Fossil B



Fossil C



Fossil D



16. What is the genus of Fossil A?

- A) Lingula
- B) Atrypa
- C) Rafinesquina
- D) Mucrospirifer
- E) None of these

17. (1.00 pts) Station 4

### Station 4

Fossil A



Fossil B



Fossil C



Fossil D



17. These pelagic creatures were filter feeders. (True or False)

- True
- False

18. (1.00 pts) Station 4

## Station 4

Fossil A



Fossil B



Fossil C



Fossil D



18. What is the Genus of Fossil C?

- A) Lingula
- B) Atrypa
- C) Rafinesquina
- D) Mucrospirifer
- E) None of these

19. (1.00 pts) Station 4

## Station 4

Fossil A



Fossil B



Fossil C



Fossil D



19. What is the Genus of Fossil B?

- A) Lingula
- B) Atrypa
- C) Mucrospirifer
- D) Rafinesquina
- E) None of these

20. (1.00 pts) Station 4

## Station 4

Fossil A



Fossil B



Fossil C



Fossil D



20. What is the Genus of Fossil D?

- A) Lingula
- B) Atrypa
- C) Mucrospirifer
- D) Rafinesquina
- E) None of these

21. (1.00 pts) Station 4

## Station 4

Fossil A



Fossil B



Fossil C



Fossil D



21. Which Fossil A thru D has can be called a living fossil?

- A) A
- B) B
- C) C
- D) D

22. (1.00 pts) Station 5

## Station 5

Fossil A



Fossil B



Fossil C



Fossil D



22. Which (2) Fossils above belong to the Phylum Anthophyta?



- A) A and B
- B) B and C
- C) A and D
- D) C and D
- E) None of these

23. (1.00 pts) Station 5

### Station 5

Fossil A



Fossil B



Fossil C



Fossil D



23. Which Fossil A thru D belongs to the Phylum Ginkgophyta?

- A) A
- B) B
- C) C
- D) D
- E) None of these

24. (3.00 pts) Station 5

## Station 5

Fossil A



Fossil B



Fossil C



Fossil D



24. Name the Genus of Fossils B, C and D. Use your official Fossil List and remember to match the spelling and upper case to get full credit.

Use the blanks below from left to right, answer for Fossil B, Fossil C and then Fossil D.

25. (1.00 pts) Station 5

## Station 5

Fossil A



Fossil B



Fossil C



Fossil D



25. Which Fossil A thru D cannot be found in the Green River Formation?

- A) A
- B) B

- C) C
- D) D
- E) None of these

26. (1.00 pts) Station 5

### Station 5

Fossil A



Fossil B



Fossil C



Fossil D



26. What is the nickname of Fossil A?

- A) tongue fern
- B) maiden hair tree
- C) plane tree
- D) scale tree
- E) None of these

27. (1.00 pts) Station 6

## Station 6

Fossil A



Fossil B



27. Name the Phylum of Fossil A.

- A) Hemichordata
- B) Porifera
- C) Bryozoa
- D) Cnidaria
- E) None of these

28. (1.00 pts) Station 6

## Station 6

Fossil A



Fossil B



28. Name the Phylum of Fossil B.

- A) Hemichordata
- B) Bryozoa
- C) Porifera
- D) Cnidaria
- E) None of these

29. (1.00 pts) Station 6

## Station 6

Fossil A



Fossil B



29. Fossil B was a creature that was \_\_\_\_\_ and \_\_\_\_\_.



- A) planktonic, colonial
- B) sessile, solitary
- C) infaunal, colonial
- D) sessile, colonial
- E) None of these

30. (1.00 pts) Station 6

### Station 6

Fossil A



Fossil B



30. What are the star shaped structures found in Fossil A called?.

- A) nematocyst
- B) radulas
- C) spicules
- D) instars
- E) chromatophores
- F) None of these

31. (1.00 pts) Station 6



## Station 6

Fossil A



Fossil B



31. When Fossil A is found in an outcrop of rock, what time period is indicated?

- A) Cretaceous
- B) Cambrian
- C) Carboniferous
- D) Silurian to Devonian
- E) Ordovician to Silurian

32. (1.00 pts) Station 6

## Station 6

Fossil A



Fossil B

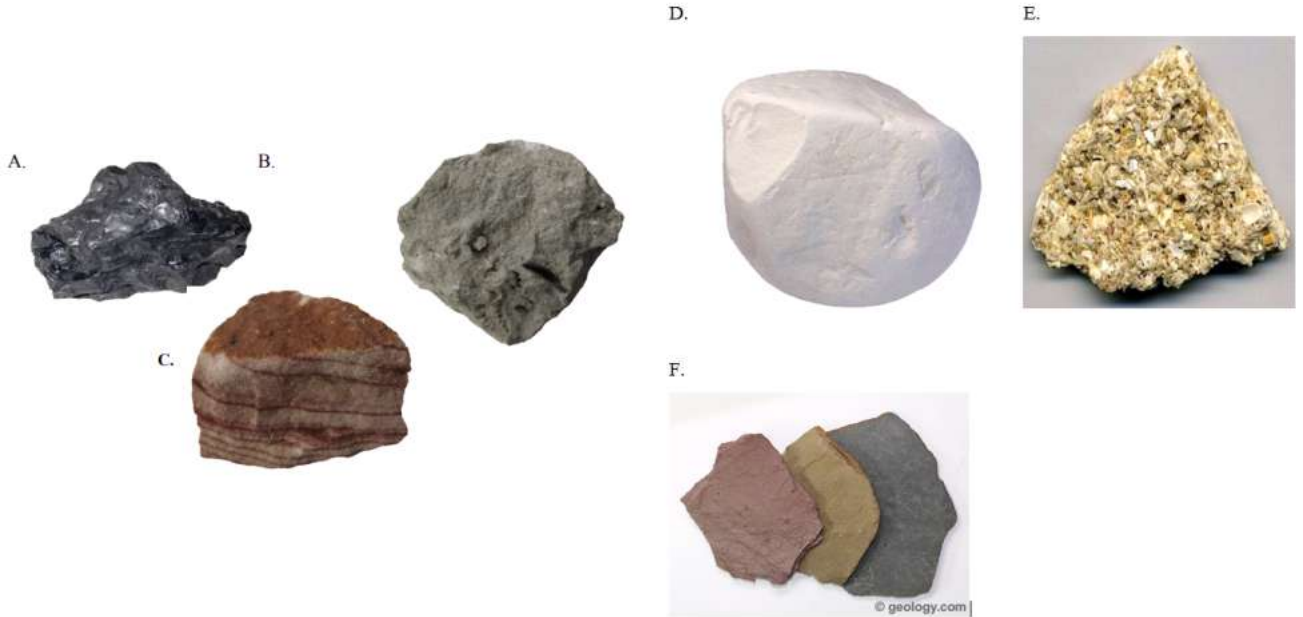


32. Describe the form of Fossil B.

- A) branching
- B) massive
- C) fenestrate

D) None of these

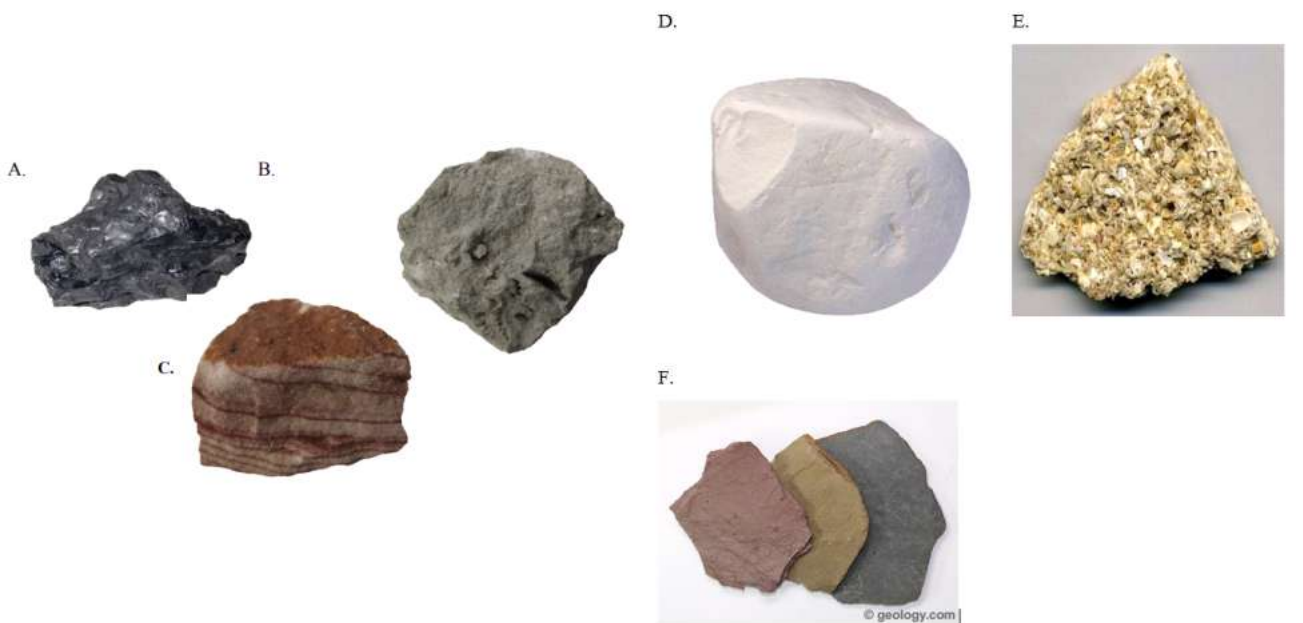
33. (1.00 pts) Station 7



33. Which of these rocks would represent a moderately high energy environment?

- A) A
- B) B
- C) C
- D) D
- E) E
- F) F

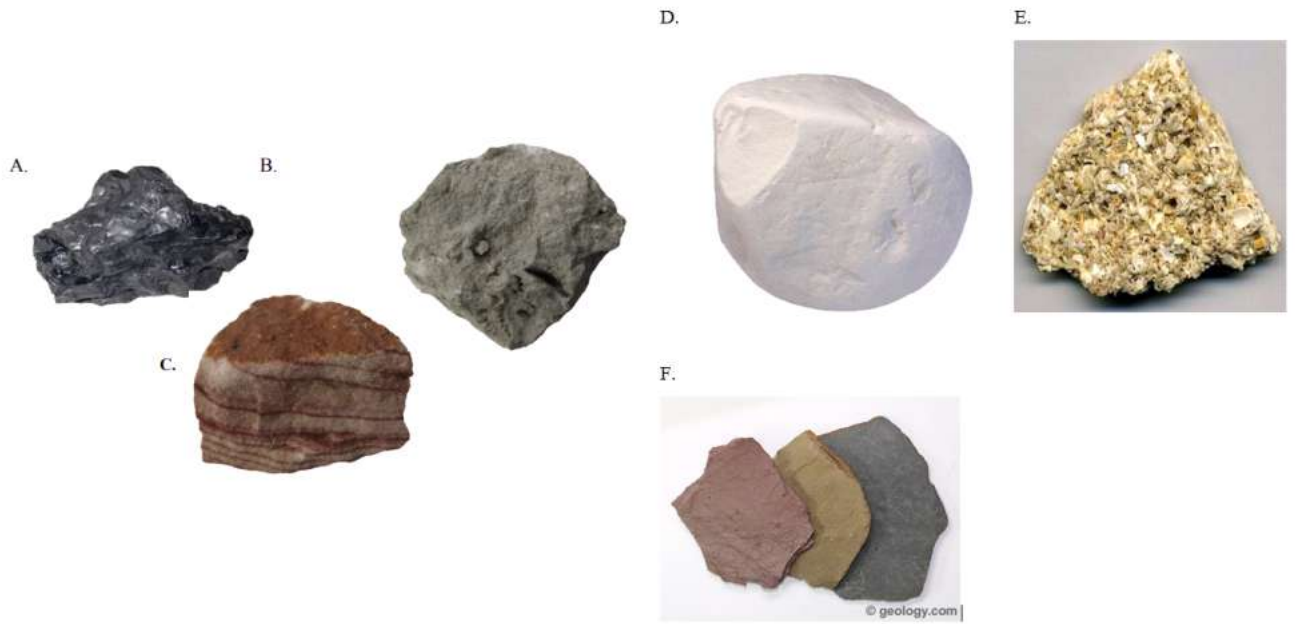
34. (1.00 pts) Station 7



34. Which of these rocks would represent a low energy environment?

- A) A
- B) B
- C) C
- D) D
- E) E
- F) F

35. (1.00 pts) Station 7



35. Which of these rocks is composed chiefly of fossil shells, formed in a zone of high energy?

- A) A
- B) B
- C) C
- D) D
- E) E
- F) F

36. (1.00 pts) Station 7

A.



B.



C.



D.



E.



F.



36. Which of these rocks is composed of the microscopic fossils of foraminiferans?

- A) A
- B) B
- C) C
- D) D
- E) E
- F) F

37. (1.00 pts) Station 7

A.



B.



C.



D.



E.



F.

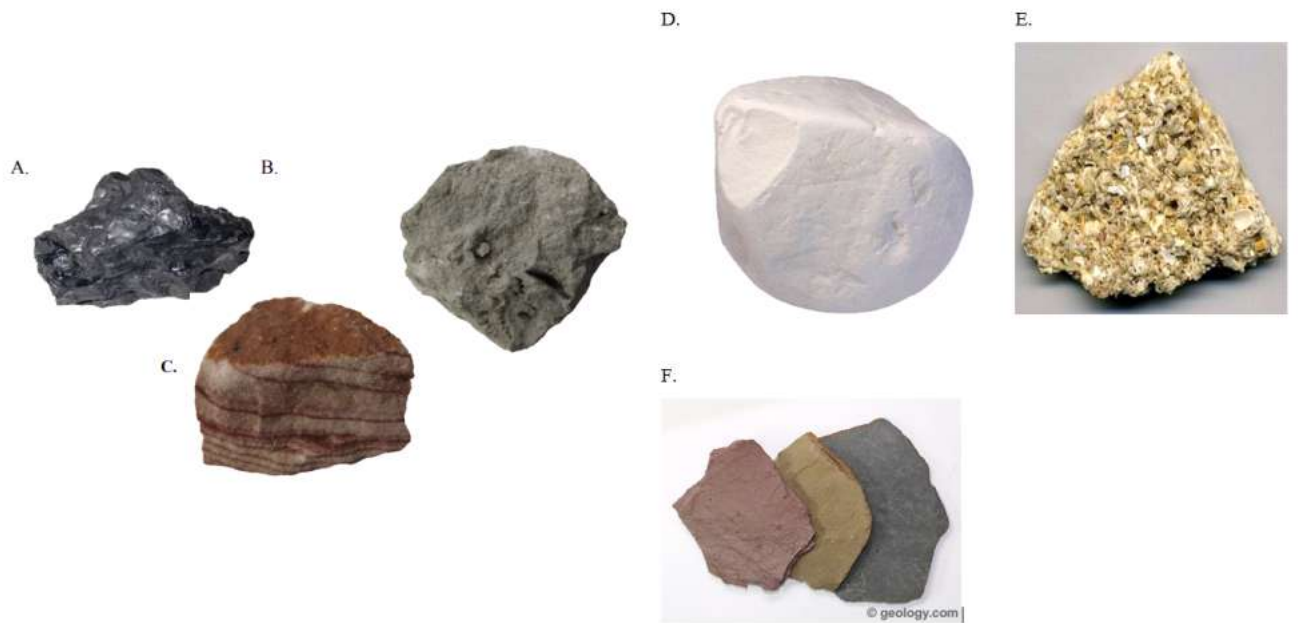


37. Which of these rocks might form from the precipitation of calcium carbonate?

- A) A
- B) B
- C) C
- D) D

- E) E
- F) F

38. (1.00 pts) Station 7

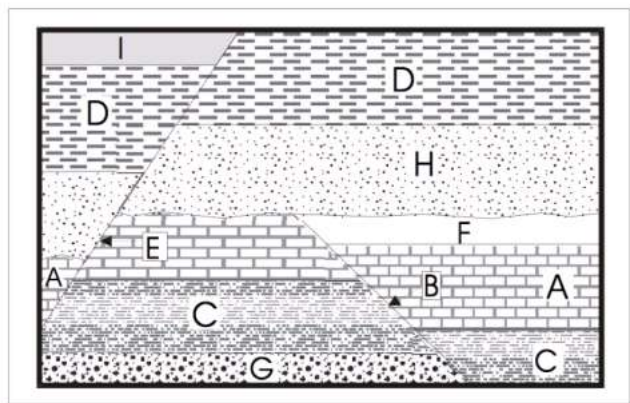


38. Which rock in this station is coal?

- A) A
- B) B
- C) C
- D) D
- E) E
- F) F

39. (1.00 pts) Station 8

Station 8



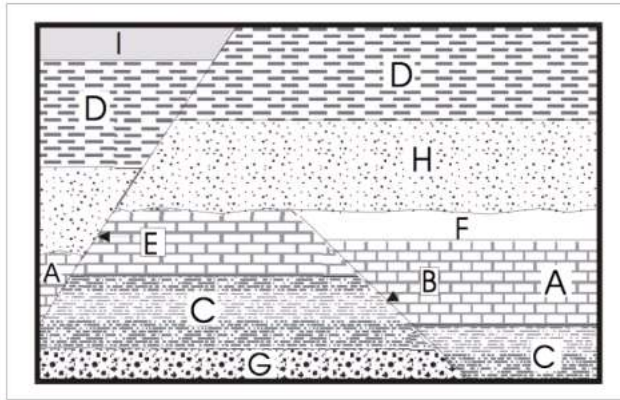
39. According to the Law of Superposition, what rock layer is the oldest?

- A) G
- B) C
- C) I



40. (1.00 pts) Station 8

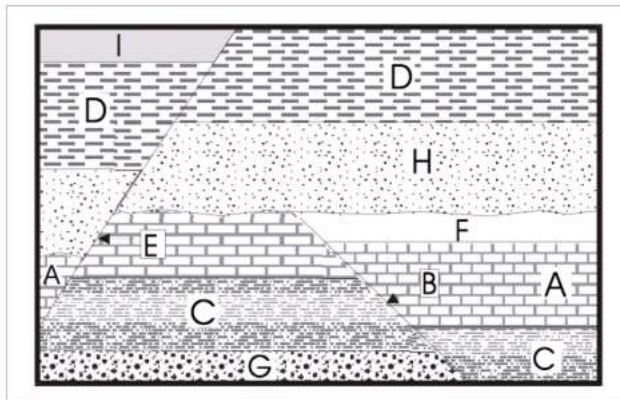
### Station 8



40. What is indicated by the letters B and E?

- A) Fault
- B) Intrusion
- C) Erosion
- D) None of these

41. (1.00 pts) Station 8



41. What is the correct order of events from oldest to youngest? Use Capitol Letters with no spaces or commas.

42. (1.00 pts) Station 9

Fossil A



Fossil B





42. What is the Phylum of Fossil A and Fossil B?

- A) Mollusca
- B) Echinodermata
- C) Cnidaria
- D) Lycopodiophyta

43. (1.00 pts) Station 9

Fossil A



Fossils B



43. Which Fossil above was a predator?

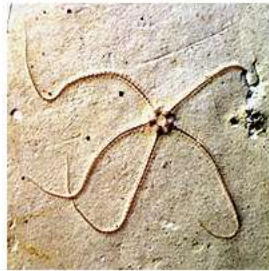
- A) A
- B) B
- C) Both A and B

44. (1.00 pts) Station 9

Fossil A



Fossil B



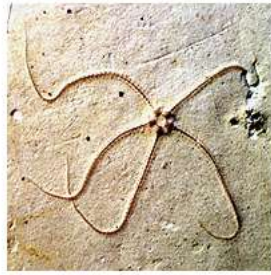
44. Which Fossil above was a filter feeder?

- A) A
- B) B
- C) A and B

45. (1.00 pts) Station 9

Fossil A

Fossil B

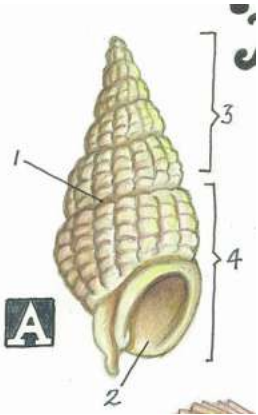


45. Fossil A belongs to the Class Echinoidea and Fossil B belongs to the Class Asteroidea. True or False

True  False

46. (3.00 pts)

### Station 10



#### Word Bank

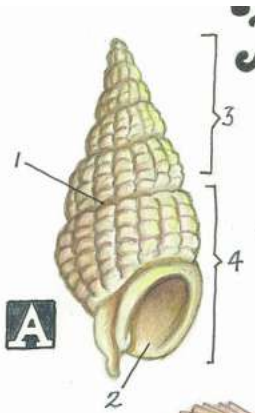
spire    tooth    mouth    suture    calyx    body whorl    arm  
aperture    beak    column    palial sirus    palial line

46. For Fossil A, assign an anatomical term to 1, 2 and 3 from the word bank above: (3 points)

(From left to right, 1, 2 and 3. Use all small case letters and spaces as indicated by the words in the word bank. Spelling must match the word in the word bank to get answers correct.)

47. (1.00 pts)

### Station 10



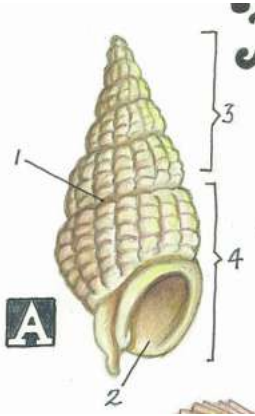
**Word Bank**

spire      tooth      mouth      suture      calyx      body whorl      arm  
aperture      beak      column      palial sirus      palial line

47. For Fossil A, assign an anatomical term to 4 from the word bank above: (1 points)

(Use all small case letters and spaces as indicated by the words in the word bank. Spelling must match the word in the word bank to get answer correct.)

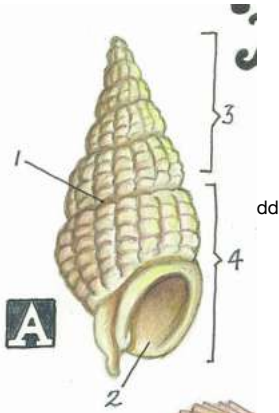
**48. (1.00 pts) Station 10**



48. What is the Class of the creature in Figure A?

- A) Bivalvia
- B) Gastropoda
- C) Cephalopoda
- D) Mollusca
- E) None of these

**49. (1.00 pts) Station 10**

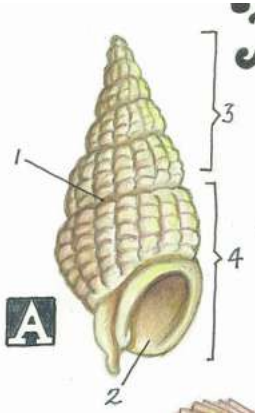


49. How does the creature in Figure A move?

- A) foot muscle
- B) propulsion of water
- C) water current and wave action
- D) it could not move

- E) None of these

50. (1.00 pts) Station 10



50. How can the creature in Figure A be described concerning its feeding habits?

- A) predator
- B) herbivore
- C) detritus feeder
- D) scavenger
- E) All of the above

You made it! Please join the Microsoft Teams meeting to get more information about Fossils C. Questions are encouraged!

1. (1.00 pts) Station 1

### Station 1



Figure 1

1. What is the Phylum of the Creature A?

- A) Trilobita
- B) Arthropoda
- C) Euripterida
- D) Calymene
- E) None of these

2. (1.00 pts) Station 1

### Station 1



Figure 1

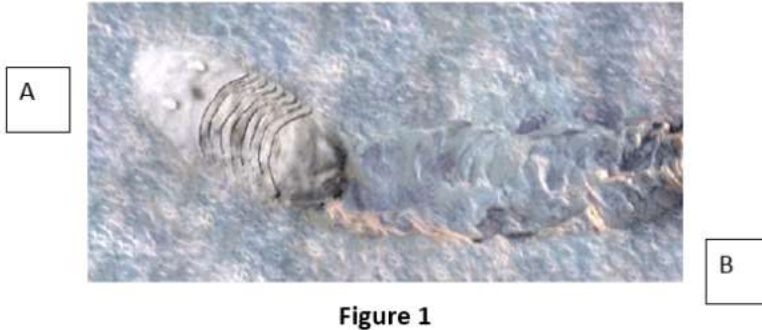
2. In Figure 1, the description of fossil B is called:

- A) Trilobite
- B) Borings
- C) Trails

- D) Detrital material
- E) Predation marks

3. (1.00 pts) Station 1

### Station 1

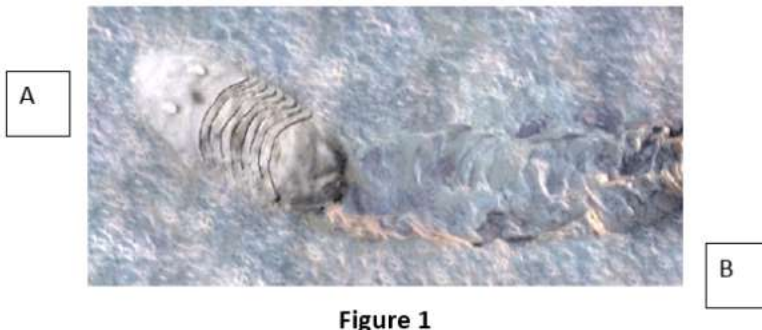


3. The Fossil in Figure 1 can be described as infaunal and benthic.

- True  False

4. (1.00 pts) Station 1

### Station 1



4. The Fossil in Figure 1 could \_\_\_\_\_ its exoskeleton as a defense against \_\_\_\_\_.

- A) shed, predators
- B) encase, predators
- C) prone, predators
- D) enroll, predators
- E) none of these

5. (1.00 pts) Station 1



## Station 1



Figure 1

5. The Fossil labeled B above is called an ichnofossil.

- True  False

6. (1.00 pts) Station 2

### Station 2



Creature A



Creature B

6. What Clade does Creature A and Creature B belong to?

- A) Chordata  
 B) Dinosauria  
 C) Theropoda

7. (1.00 pts) Station 2

### Station 2



Creature A



Creature B

7. Creature A is in the Order \_\_\_\_\_.

- A) Saurischia
- B) Ornithischia
- C) Ornithopoda

8. (1.00 pts) Station 2

Station 2



Creature A



Creature B

8. Creature B is in the Order \_\_\_\_\_.

- A) Ornithischia
- B) Saurichia
- C) Sauropodomorpha

9. (1.00 pts) Station 2

Station 2



Creature A



Creature B

9. What Geologic Era did Creature A and Creature B live?

- A) Mesozoic
- B) Early Paleozoic
- C) Late Jurassic
- D) Middle Cretaceous
- E) None of these

10. (1.00 pts) Station 2

## Station 2



Creature A



Creature B

10. Which Creature was Bipedal?

- A) Creature A
- B) Creature B
- C) None of these

11. (3.00 pts)

Station 3

## Station 3

Name the Order, Genus or Species of the Fossils A through H. Choose from the following word bank. Answers must be typed in exactly as spelled in word bank (Upper case, lower case, etc.)

Plateosaurus Dimetrodon H. sapiens Basilosaurus Archaeopteryx H. neanderthalensis Mammut  
Spinosaurus Plesiosaur Mosasaur Mammuthus Mesohippus Equus Pterosaur

Fossil A



Fossil C



Fossil E



Fossil B



Fossil D



Fossil F



Fossil G



Fossil H



11. Identify Fossils A, B and C. There are 3 blanks, below. Identify A, then B and finally C. (From left to right) Use the exact word in the word bank to get credit.

Mesohippus

Archeopteryx

H. neanderthalensis

12. (3.00 pts)  
Station 3

### Station 3

Name the Order, Genus or Species of the Fossils A through H. Choose from the following work bank. Answers must be typed in exactly as spelled in word bank (Upper case, lower case, etc.)

Plateosaurus Dimetrodon H. sapiens Basilosaurus Archeopteryx H. neanderthalensis Mammut  
Spinosaurus Plesiosaur Mosasaur Mammuthus Mesohippus Equus Pterosaur

### Station 3

Name the Order, Genus or Species of the Fossils A through H. Choose from the following work bank. Answers must be typed in exactly as spelled in word bank (Upper case, lower case, etc.)

Plateosaurus Dimetrodon H. sapiens Basilosaurus Archaeopteryx H. neanderthalensis Mammut  
Spinosaurus Plesiosaur Mosasaur Mammuthus Mesohippus Equus Pterosaur

Fossil A



Fossil B



Fossil C



Fossil D



Fossil G



Fossil H



Fossil E



Fossil F



12. Identify Fossils D, E and F. There are 3 blanks, below. Identify D, then E and then F. (From left to right) Use the exact word in the word bank to get credit.

H. sapiens

Mosasaur

Dimetrodon

13. (2.00 pts)  
Station 3

### Station 3

Name the Order, Genus or Species of the Fossils A through H. Choose from the following work bank. Answers must be typed in exactly as spelled in word bank (Upper case, lower case, etc.)

Plateosaurus Dimetrodon H. sapiens Basilosaurus Archaeopteryx H. neanderthalensis Mammut  
Spinosaurus Plesiosaur Mosasaur Mammuthus Mesohippus Equus Pterosaur

Fossil A



Fossil B



Fossil C



Fossil D



Fossil E



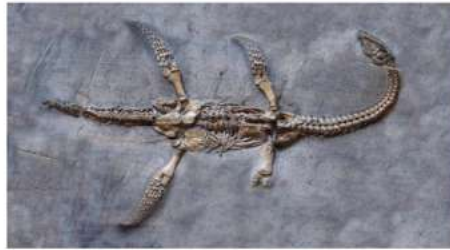
Fossil F



Fossil G



Fossil H



13. Identify Fossils G and H. There are 3 blanks, below. Identify G, then H. Leave the 3rd blank empty. (From left to right) Use the exact word in the word bank to get credit.



14. (1.00 pts)

Station 4



## Station 4

Fossil A



Fossil B



Fossil C



Fossil D



14. The Fossils A thru D have a filter called a \_\_\_\_\_ which they use to catch small particles of food that float past them in the water. They live in the sea, and most are attached to the sea-floor by a fleshy stalk called a \_\_\_\_\_.

- A) siphon, umbro
- B) tentacles, ligament
- C) lophophore, pedicle
- D) None of these

15. (1.00 pts) Station 4

## Station 4

Fossil A



Fossil B



Fossil C



Fossil D



15. What Phylum do Fossils A thru D belong to?

- A) Mollusca
- B) Brachiopoda
- C) Bivalvia
- D) Gastropoda

16. (1.00 pts) Station 4

## Station 4

Fossil A



Fossil B



Fossil C



Fossil D



16. What is the genus of Fossil A?

- A) Lingula
- B) Atrypa
- C) Rafinesquina
- D) Mucrospirifer
- E) None of these

17. (1.00 pts) Station 4

### Station 4

Fossil A



Fossil B



Fossil C



Fossil D



17. These pelagic creatures were filter feeders. (True or False)

- True
- False

18. (1.00 pts) Station 4

## Station 4

Fossil A



Fossil B



Fossil C



Fossil D



18. What is the Genus of Fossil C?

- A) Lingula
- B) Atrypa
- C) Rafinesquina
- D) Mucrospirifer
- E) None of these

19. (1.00 pts) Station 4

## Station 4

Fossil A



Fossil B



Fossil C



Fossil D



19. What is the Genus of Fossil B?

- A) Lingula
- B) Atrypa
- C) Mucrospirifer
- D) Rafinesquina
- E) None of these

20. (1.00 pts) Station 4

## Station 4

Fossil A



Fossil B



Fossil C



Fossil D



20. What is the Genus of Fossil D?

- A) Lingula
- B) Atrypa
- C) Mucrospirifer
- D) Rafinesquina
- E) None of these

21. (1.00 pts) Station 4



## Station 4

Fossil A



Fossil B



Fossil C



Fossil D



21. Which Fossil A thru D has can be called a living fossil?

- A) A
- B) B
- C) C
- D) D

22. (1.00 pts) Station 5

## Station 5

Fossil A



Fossil B



Fossil C



Fossil D



22. Which (2) Fossils above belong to the Phylum Anthophyta?

- A) A and B
- B) B and C
- C) A and D
- D) C and D
- E) None of these

23. (1.00 pts) Station 5

### Station 5

Fossil A



Fossil B



Fossil C



Fossil D



23. Which Fossil A thru D belongs to the Phylum Ginkgophyta?

- A) A
- B) B
- C) C
- D) D
- E) None of these

24. (3.00 pts) Station 5

## Station 5

Fossil A



Fossil B



Fossil C



Fossil D



24. Name the Genus of Fossils B, C and D. Use your official Fossil List and remember to match the spelling and upper case to get full credit.

Use the blanks below from left to right, answer for Fossil B, Fossil C and then Fossil D.

25. (1.00 pts) Station 5

## Station 5

Fossil A



Fossil B



Fossil C



Fossil D



25. Which Fossil A thru D cannot be found in the Green River Formation?

A) A

B) B

- C) C
- D) D
- E) None of these

26. (1.00 pts) Station 5

### Station 5

Fossil A



Fossil B



Fossil C



Fossil D



26. What is the nickname of Fossil A?

- A) tongue fern
- B) maiden hair tree
- C) plane tree
- D) scale tree
- E) None of these

27. (1.00 pts) Station 6

## Station 6

Fossil A



Fossil B



27. Name the Phylum of Fossil A.

- A) Hemichordata
- B) Porifera
- C) Bryozoa
- D) Cnidaria
- E) None of these

28. (1.00 pts) Station 6



## Station 6

Fossil A



Fossil B



28. Name the Phylum of Fossil B.

- A) Hemichordata
- B) Bryozoa
- C) Porifera
- D) Cnidaria
- E) None of these

29. (1.00 pts) Station 6

## Station 6

Fossil A



Fossil B



29. Fossil B was a creature that was \_\_\_\_\_ and \_\_\_\_\_.



- A) planktonic, colonial
- B) sessile, solitary
- C) infaunal, colonial
- D) sessile, colonial
- E) None of these

30. (1.00 pts) Station 6

### Station 6

Fossil A



Fossil B



30. What are the star shaped structures found in Fossil A called?.

- A) nematocyst
- B) radulas
- C) spicules
- D) instars
- E) chromatophores
- F) None of these

31. (1.00 pts) Station 6

## Station 6

Fossil A



Fossil B



31. When Fossil A is found in an outcrop of rock, what time period is indicated?

- A) Cretaceous
- B) Cambrian
- C) Carboniferous
- D) Silurian to Devonian
- E) Ordovician to Silurian

32. (1.00 pts) Station 6

## Station 6

Fossil A



Fossil B

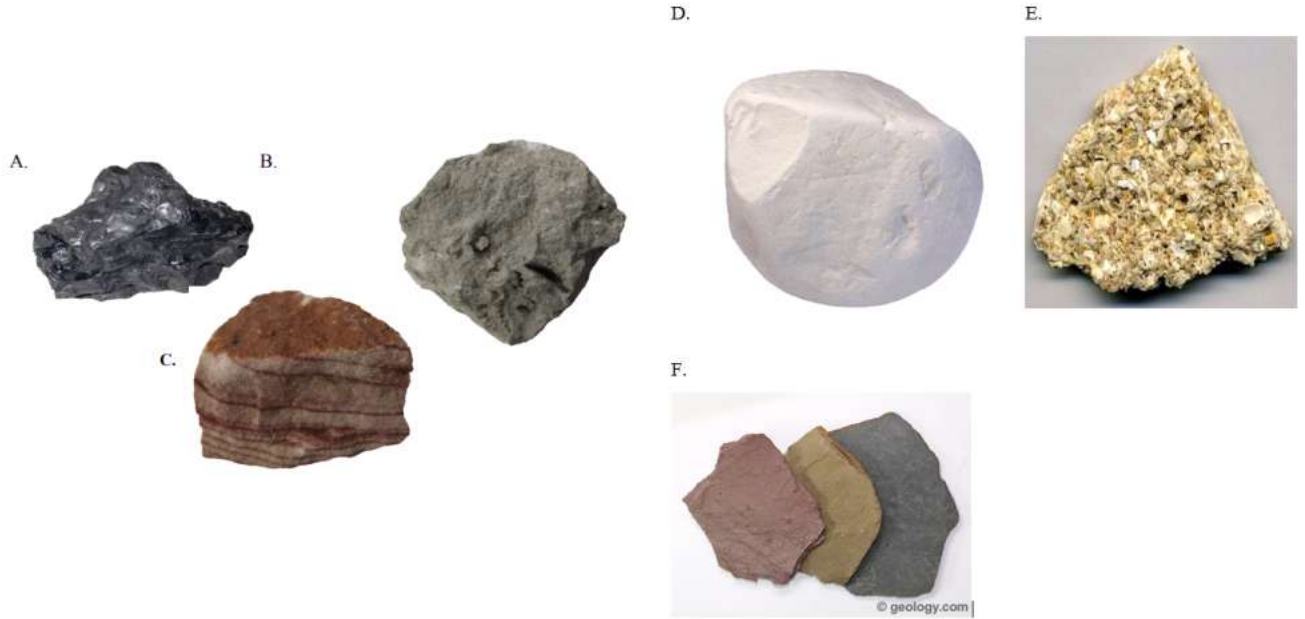


32. Describe the form of Fossil B.

- A) branching
- B) massive
- C) fenestrate

D) None of these

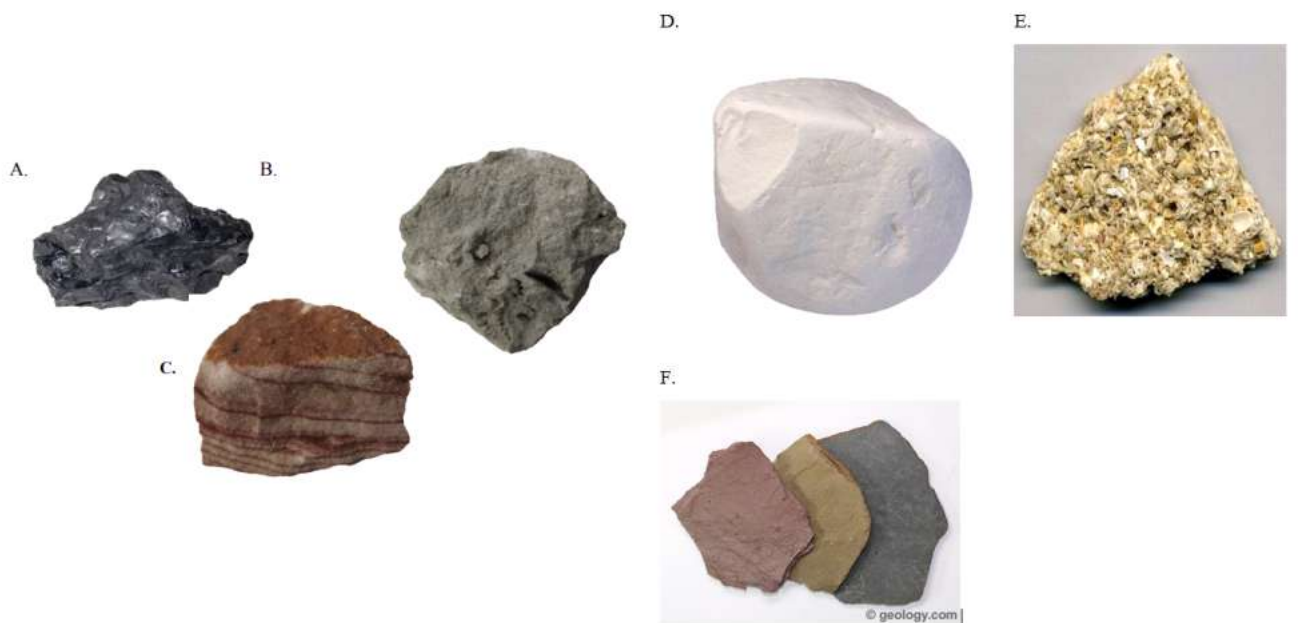
33. (1.00 pts) Station 7



33. Which of these rocks would represent a moderately high energy environment?

- A) A
- B) B
- C) C
- D) D
- E) E
- F) F

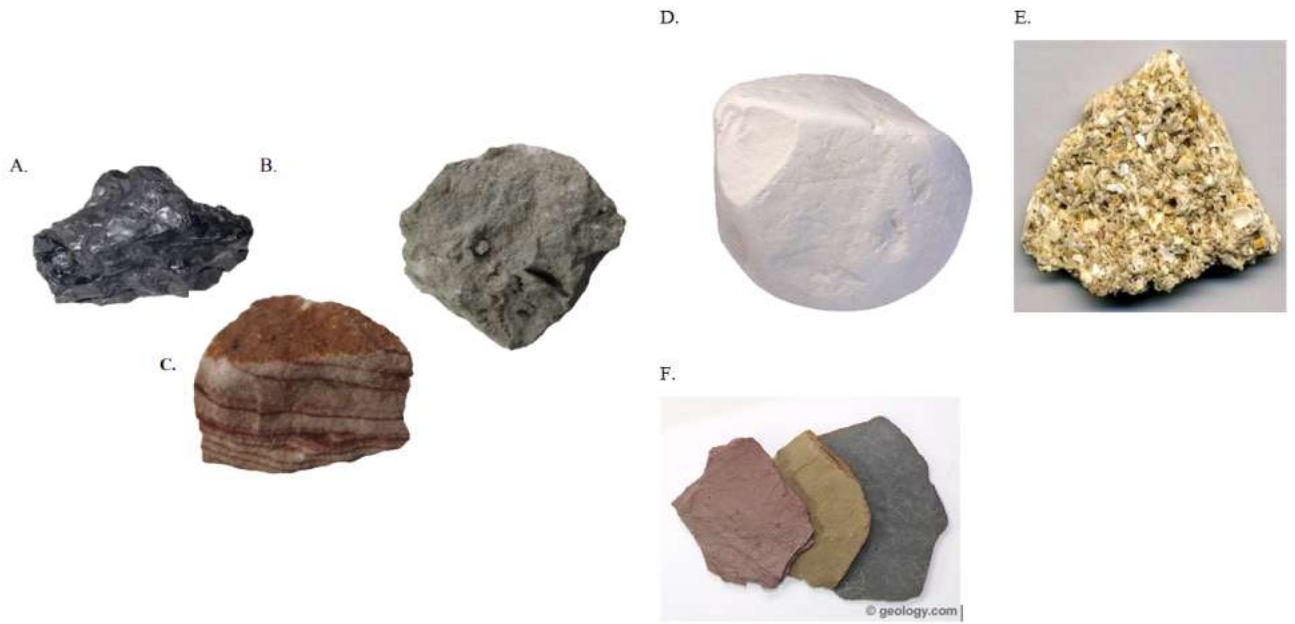
34. (1.00 pts) Station 7



34. Which of these rocks would represent a low energy environment?

- A) A
- B) B
- C) C
- D) D
- E) E
- F) F

35. (1.00 pts) Station 7



35. Which of these rocks is composed chiefly of fossil shells, formed in a zone of high energy?

- A) A
- B) B
- C) C
- D) D
- E) E
- F) F

36. (1.00 pts) Station 7

A.



B.



C.



D.



E.



F.



36. Which of these rocks is composed of the microscopic fossils of foraminiferans?

- A) A
- B) B
- C) C
- D) D
- E) E
- F) F

37. (1.00 pts) Station 7

A.



B.



C.



D.



E.



F.



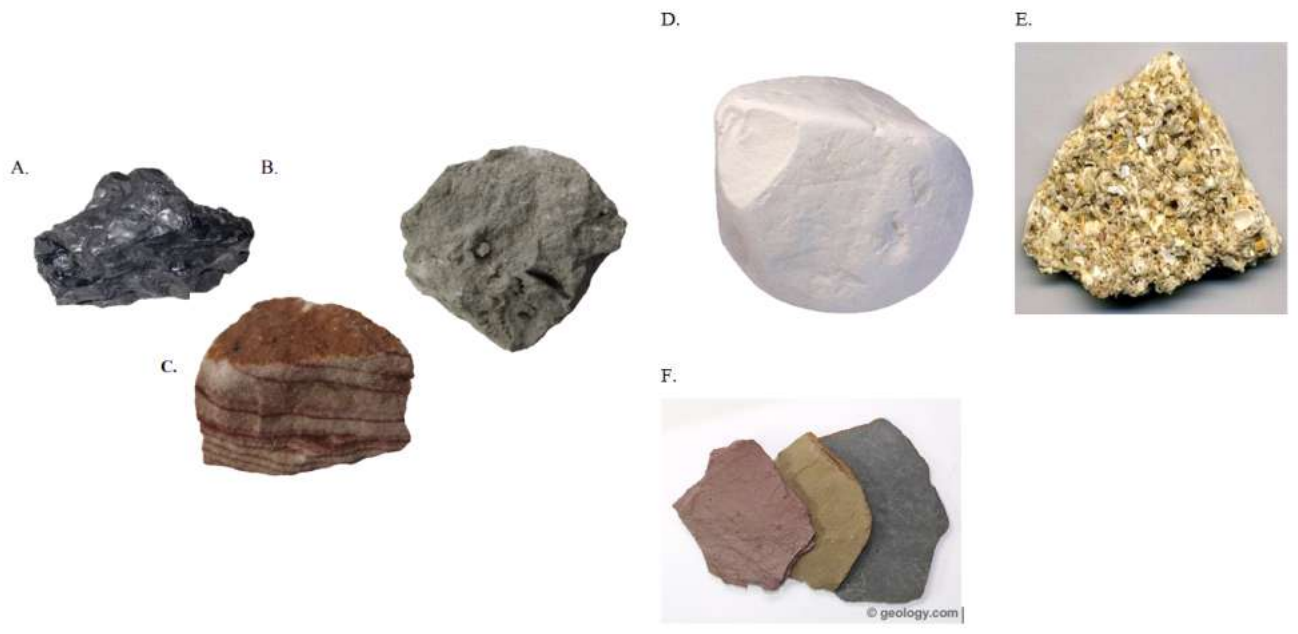
37. Which of these rocks might form from the precipitation of calcium carbonate?

- A) A
- B) B
- C) C
- D) D



- E) E
- F) F

38. (1.00 pts) Station 7

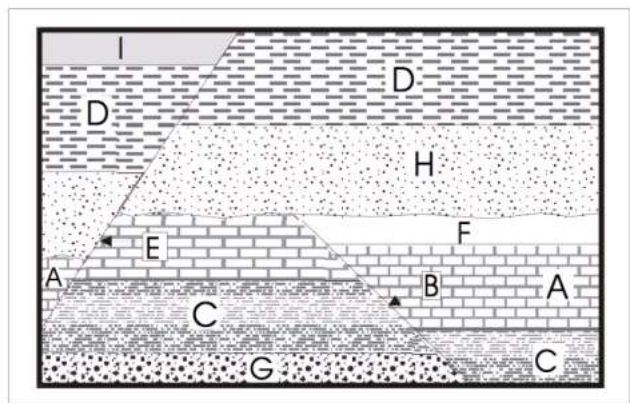


38. Which rock in this station is coal?

- A) A
- B) B
- C) C
- D) D
- E) E
- F) F

39. (1.00 pts) Station 8

Station 8



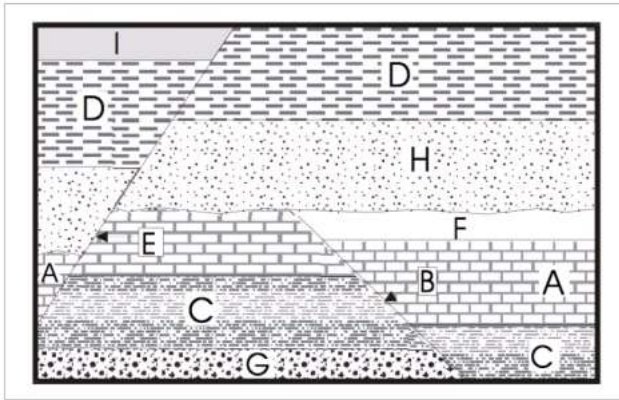
39. According to the Law of Superposition, what rock layer is the oldest?

- A) G
- B) C
- C) I



40. (1.00 pts) Station 8

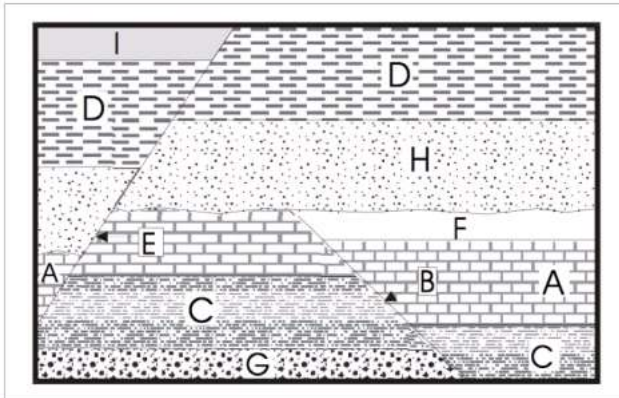
### Station 8



40. What is indicated by the letters B and E?

- A) Fault
- B) Intrusion
- C) Erosion
- D) None of these

41. (1.00 pts) Station 8



41. What is the correct order of events from oldest to youngest? Use Capitol Letters with no spaces or commas.

GCAFBHDIE

42. (1.00 pts) Station 9

Fossil A



Fossil B



42. What is the Phylum of Fossil A and Fossil B?

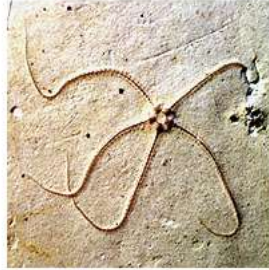
- A) Mollusca
- B) Echinodermata
- C) Cnidaria
- D) Lycopodiophyta

43. (1.00 pts) Station 9

Fossil A



Fossils B



43. Which Fossil above was a predator?

- A) A
- B) B
- C) Both A and B

44. (1.00 pts) Station 9

Fossil A



Fossil B



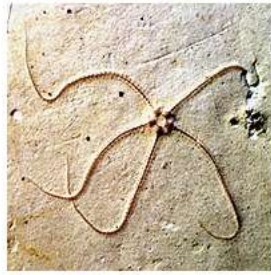
44. Which Fossil above was a filter feeder?

- A) A
- B) B
- C) A and B

45. (1.00 pts) Station 9

Fossil A

Fossil B

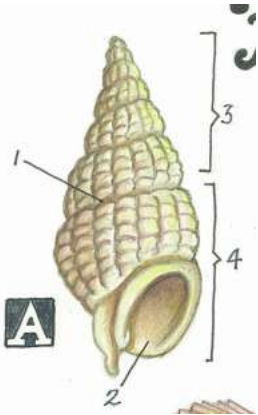


45. Fossil A belongs to the Class Echinoidea and Fossil B belongs to the Class Asteroidea. True or False

True  False

46. (3.00 pts)

### Station 10



#### Word Bank

spire    tooth    mouth    suture    calyx    body whorl    arm  
aperture    beak    column    palial sirus    palial line

46. For Fossil A, assign an anatomical term to 1, 2 and 3 from the word bank above: (3 points)

(From left to right, 1, 2 and 3. Use all small case letters and spaces as indicated by the words in the word bank. Spelling must match the word in the word bank to get answers correct.)

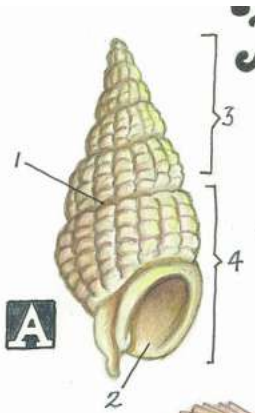
suture

aperture

spire

47. (1.00 pts)

### Station 10



**Word Bank**

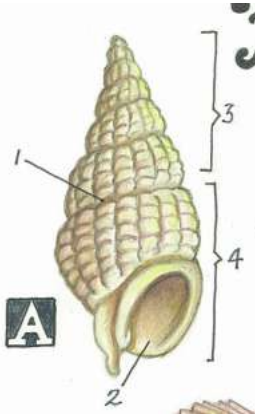
spire      tooth      mouth      suture      calyx      body whorl      arm  
aperture      beak      column      palial sirus      palial line

47. For Fossil A, assign an anatomical term to 4 from the word bank above: (1 points)

(Use all small case letters and spaces as indicated by the words in the word bank. Spelling must match the word in the word bank to get answer correct.)

body whorl

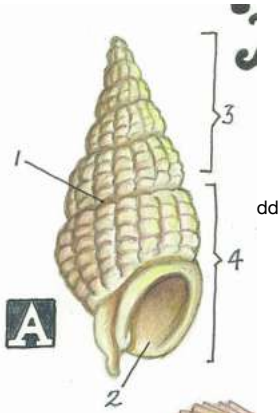
**48. (1.00 pts) Station 10**



48. What is the Class of the creature in Figure A?

- A) Bivalvia
- B) Gastropoda
- C) Cephalopoda
- D) Mollusca
- E) None of these

**49. (1.00 pts) Station 10**

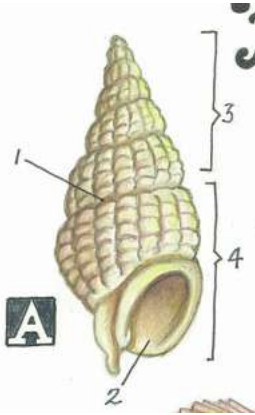


49. How does the creature in Figure A move?

- A) foot muscle
- B) propulsion of water
- C) water current and wave action
- D) it could not move

- E) None of these

50. (1.00 pts) Station 10



50. How can the creature in Figure A be described concerning its feeding habits?

- A) predator
- B) herbivore
- C) detritus feeder
- D) scavenger
- E) All of the above

You made it! Please join the Microsoft Teams meeting to get more information about Fossils C. Questions are encouraged!